

eHealth Live

Remote Presence
Solution for
eHealthcare





What is eHealth Live?

Remote presence solution developed in co-operation with nursing homes

Easy to use integrated solution specifically targeted for communication between nursing homes and families & relatives

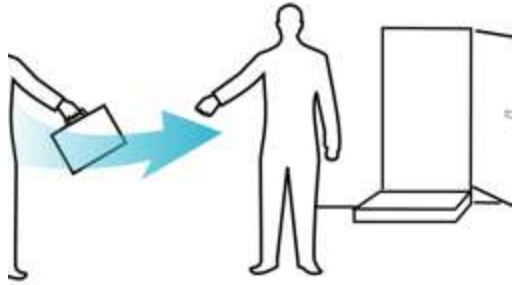


Benefits

- ✓ Extremely easy to use and secure
- ✓ Big screen, professional audio, easy to manouver
- ✓ Enhanced presence with 360° panoramic view
- ✓ Relatives don't need their own devices and complicated setup. Everything is pre-installed delivered in durable case
- ✓ Reduces the risks of infection during pandemic

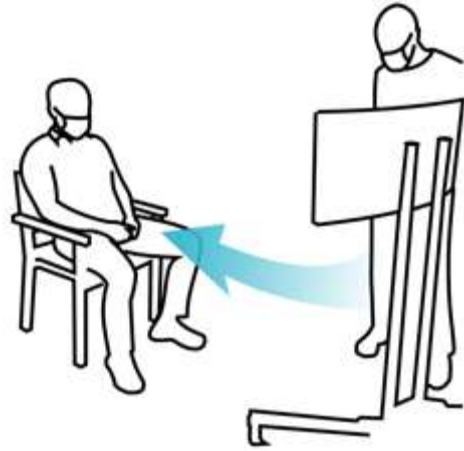


1



Relative borrows the eHealth Live unit from the nursing home

2



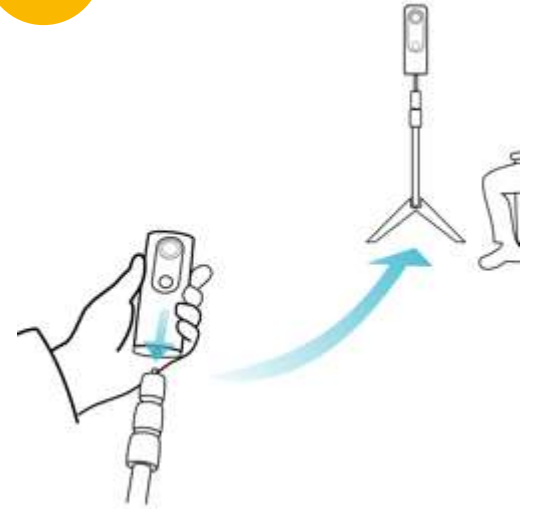
Nurse transfers the TV unit to the resident's room

3



Call is established with one click of a button

4



Relative can share enhanced view by activating the 360° camera

How it works?

Use cases
-
Normal
conditions





1

Secure virtual communication
between relative and resident

2

Share events and concerts
also during isolation

3

Internal use at nursing home
e.g. secure communication between care
teams and residents

Use cases
-
Infections
Pandemic

All included
in one kit

Nursing home TV unit

Big curved display 34"

Easy to manouver stand

5G Tablet 10"

Video call application

5G mobile connection (Telia)

Flexible mount

Integrated stand

Conference speaker

Instructions

Charger & cabling



Family unit

5G Tablet 10"

- Video call application
- 5G mobile connection (Telia)
- Protective case / table mount
- Charger & cables

360° camera

- Video call application
- Charger & cables

360° camera stand

- Mini tripod
- Extension arm
- Counterweight

Carrying case

- 2-layers with protective foam
- Durable, waterproof case
- Quick guide



Designed for
easy operation

1. Power on

Press power button



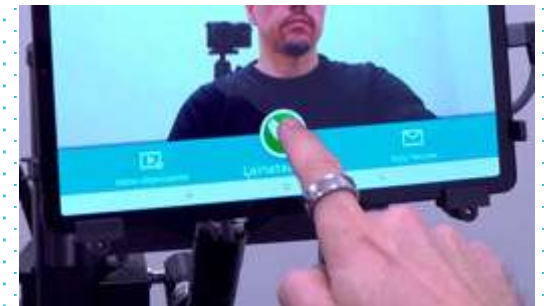
2. Open the app

Tap the application icon

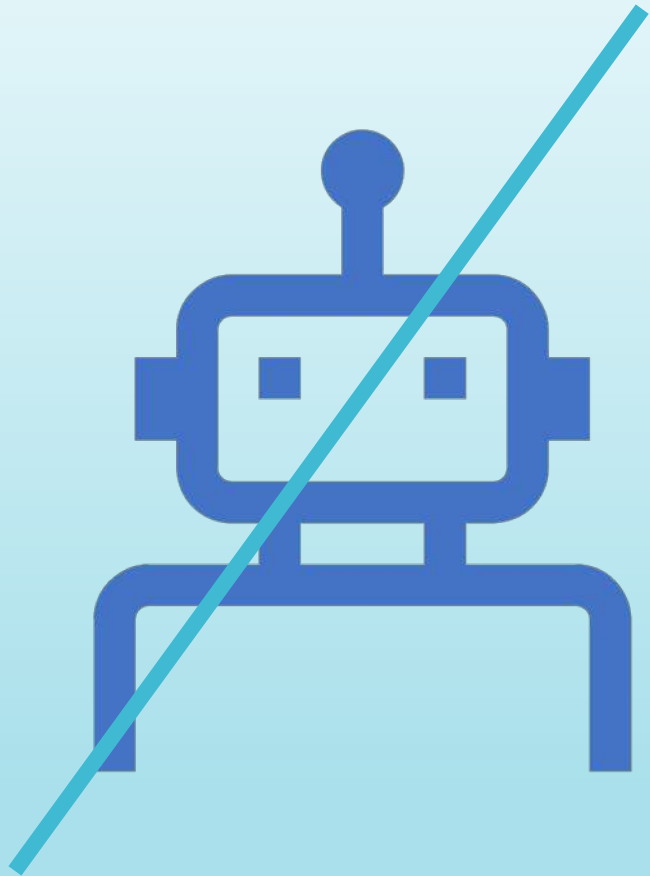


3. Call

Just press the green call button



Equipment includes both laminated quick instructions and built in video tutorials



High security

Based on secure Telia mobile corporate network (LYV).
Video stream is encrypted between the peers.

Calls can be established only between paired and trusted devices.

Separate management interface to collect feedback and to monitor the data connections anonymously.

Everything is based on mobile network with trusted SIM cards. No need to use any home or carecenter internet connection.

Anonymous connections

Calls can be established only between paired devices

No calls to outsiders or “wrong numbers”

100% anonymous use. Collected usage data doesn't contain any information about the user names or geolocations.

No need to set up user accounts

Tablet applications can be updated over the air. No unnecessary visits to nursing homes



Selected references



Finwe Oy
Teknologiantie 11
90570 OULU

CEO Juha Kela
040 769 4061
juha.kela@finwe.fi