

# Digital Platforms in Manufacturing Industry

Sustainable Manufacturing



CREATING A SMARTER  
FUTURE TODAY

Jyrki Keskinen

2020-03-05



CREATING A SMARTER  
FUTURE **TODAY**

- › Established in 1999
- › Private ownership, majority owned by employees
- › Continuous organic and profitable growth
- › Employing highly skilled software and electronics experts



National  
Entrepreneur  
Award **2016**



Microsoft Partner  
GOLD Application Development



EtherCAT®  
Technology Group



# Technology & Digitalization Services



**Analytics, AI and Big Data**



**Cloud Solutions**



**Consulting**



**Electronics Design & Embedded Systems**



**Internet of Things Solutions**



**Cyber Security**



**Web and Mobile Solutions**



**DevOps**



**Service Design**



# Digitalizing Your Business

**Professional Digital Services**  
& Technology Partnership

Research & Development

Production

Marketing

Sales

Installation

Service

Lifecycle



**SUMMIUM<sup>®</sup> Selector**

**SUMMIUM<sup>®</sup> CPQ**

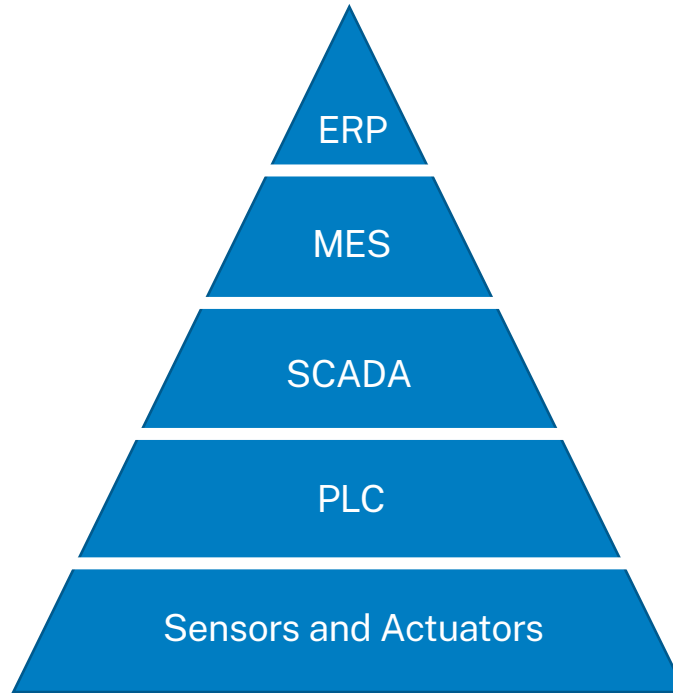


**Productized Services**

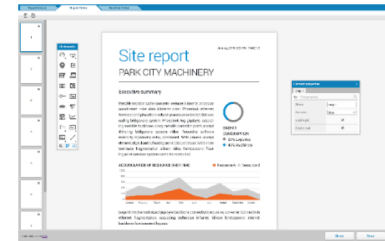
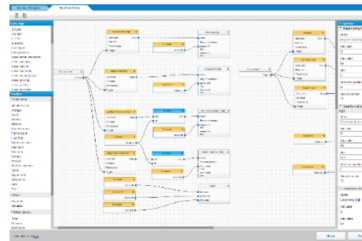
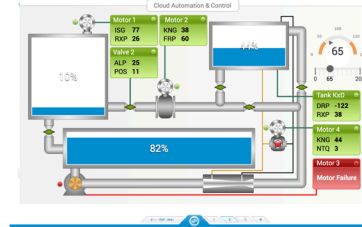
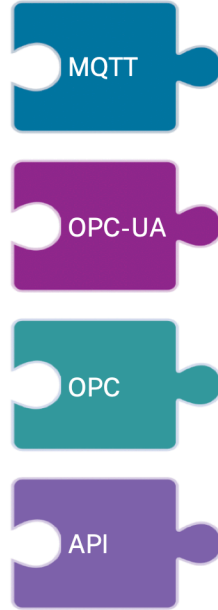
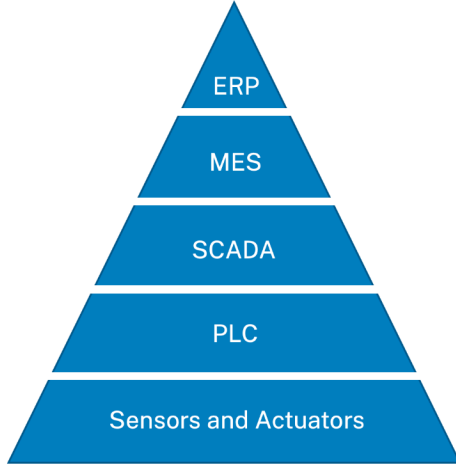


# Manufacturing Industry - Data Flow Today

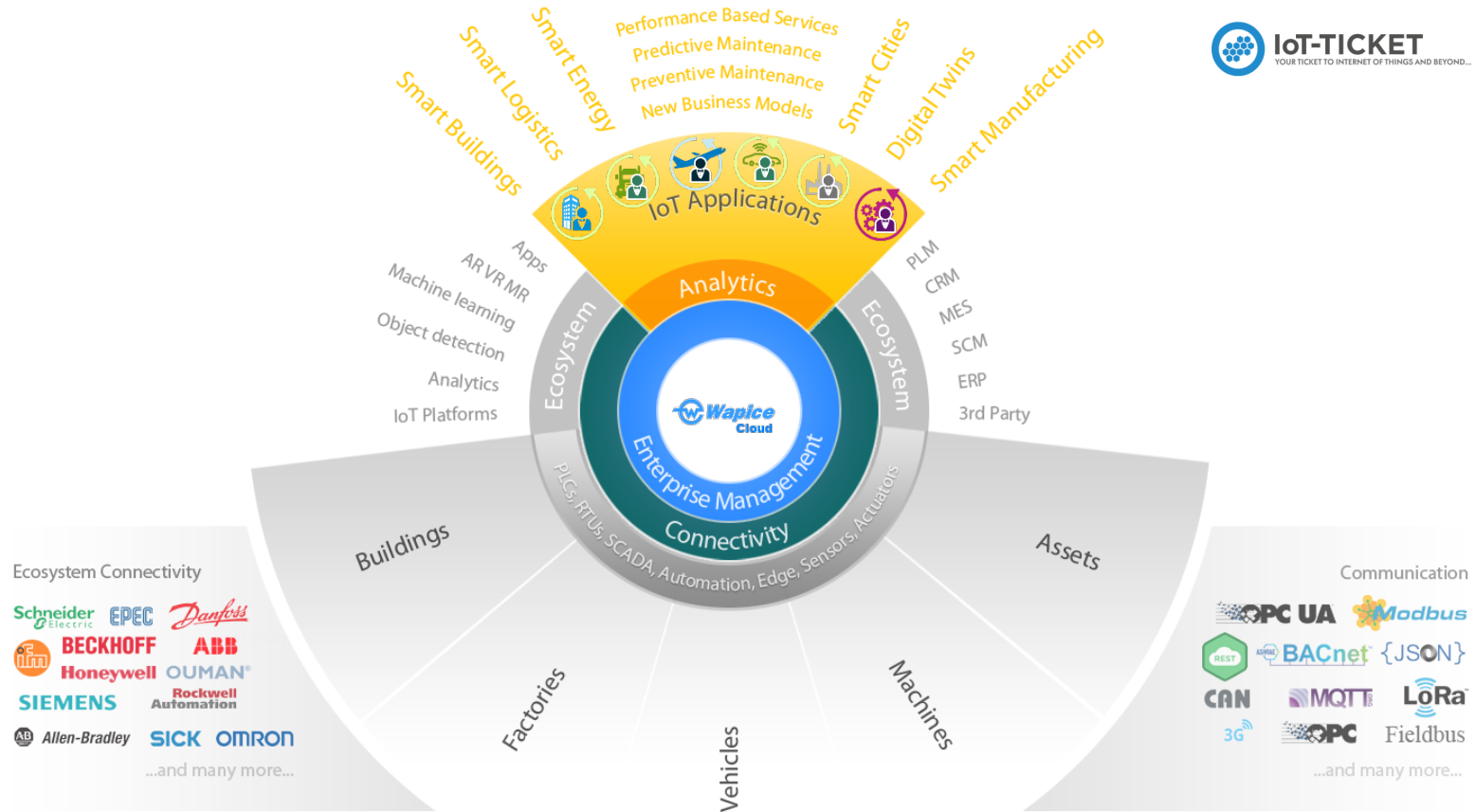
- › Enterprise level
- › Management level
- › Process Control level
- › Control level
- › Sensor level



# Industry - Data Flow Next Level



# IoT-TICKET can integrate and boost an existing ecosystem



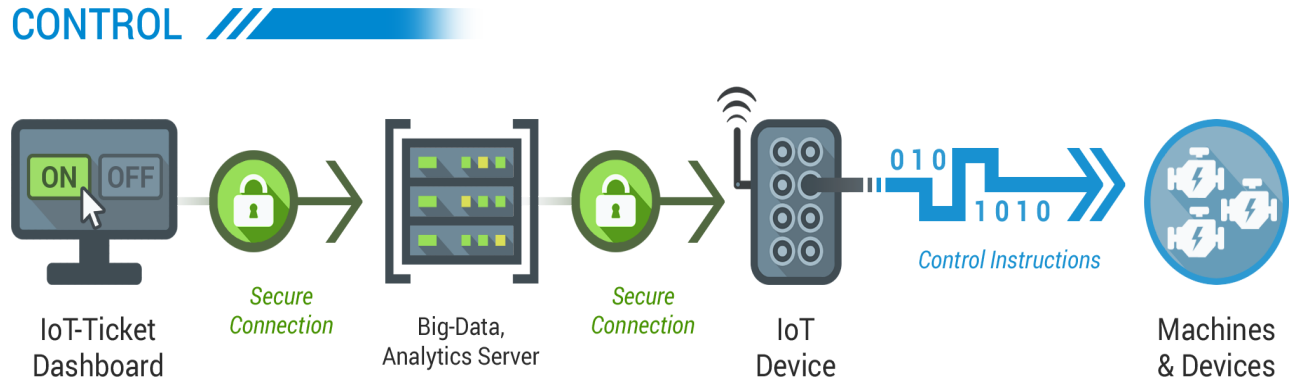
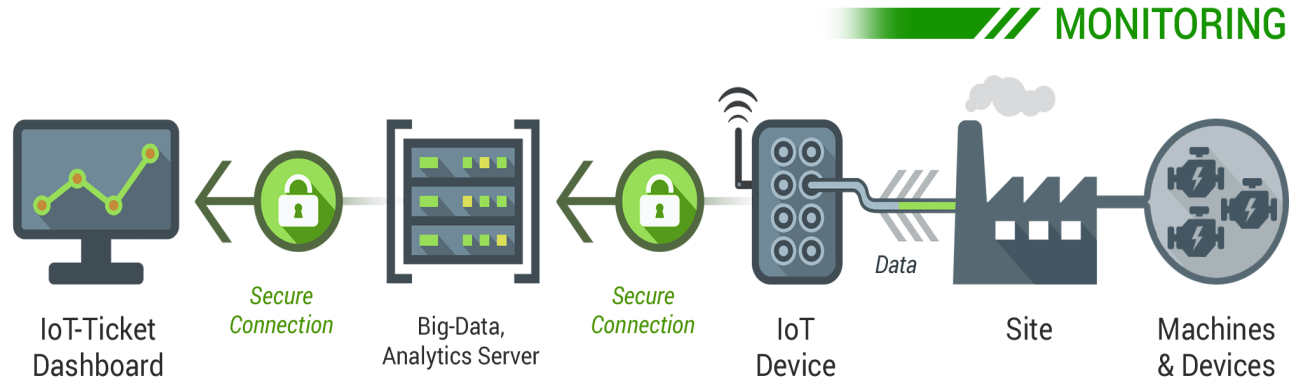
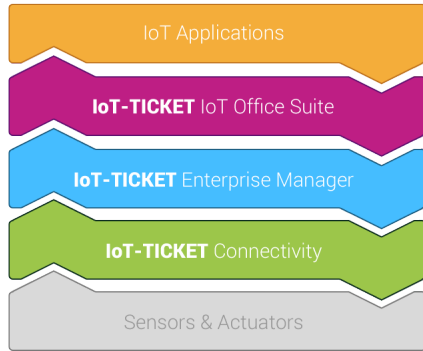
Ltd.

# IoT-TICKET, Solving tomorrow's challenges already today





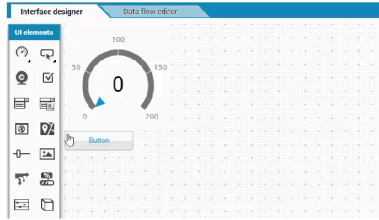
# IoT-TICKET overview: A complete IoT platform



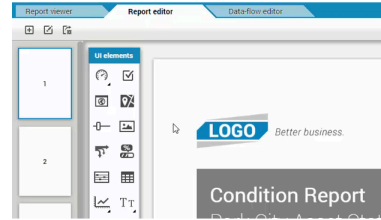
# IoT-TICKET key features

Winning end-to-end IIoT with superior tools & usability

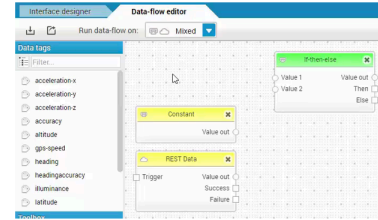
## Drag & drop dashboard building



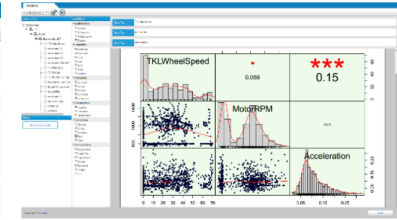
## Drag & drop report building



## Data-flow logic



## Big Data Analytics



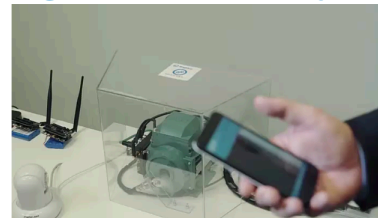
## 3D support, digital twins



## Alarms & events



## Augmented & virtual reality



## Mobile designer



# IoT-TICKET, The Internet of Things Office Suite

The most easy to use, complete and modern IoT experience



Dashboards



Reports



Apps



Analytics



Events



Edge Computing


IoT Office Suite



# Summium

## Configure, Price, Quote (CPQ)

TOTAL PRICE  
163,000 €



**CONFIGURATION** **SERVICES**

LENGTH 6.5 m

**MAX LOAD**  
Maximum load weight the truck body can handle. Increasing load affects the truck in various ways.

3  6  9  12 TONS

**COLOR**  
     BLUE-GRAY

**LOGO**  
LOGOTYPE.JPG **UPLOAD**

### MULTIPLE FORMATS


**QUOTE**

TECH TERMS ANALYSIS INFORMATION

CUSTOMER

PRODUCT 6 934,200 €

SERVICES 35,000 €



TOTAL 969,200 €

Company

PDF, WORD, EXCEL



**CONFIGURATION** **SERVICES**

MAINTENANCE

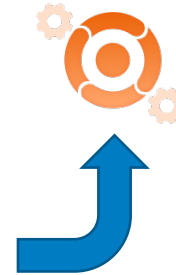
SERVICE 1  SERVICE 2

SERVICE 3  SERVICE 4

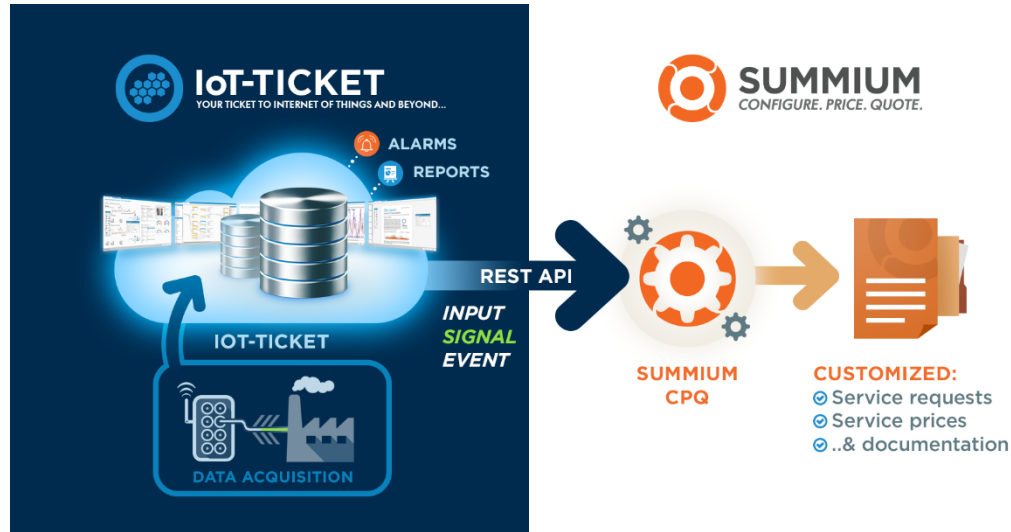
ACCESSORIES

ITEM 1  ITEM 2

SERVICE PRICE 20,000 €



# IoT And Service Level Decision Making





**Global Application Innovation Partner Award Winner at Microsoft Inspire, Las Vegas**



CREATING A SMARTER  
FUTURE **TODAY**

Visit [wapice.com](https://wapice.com)