



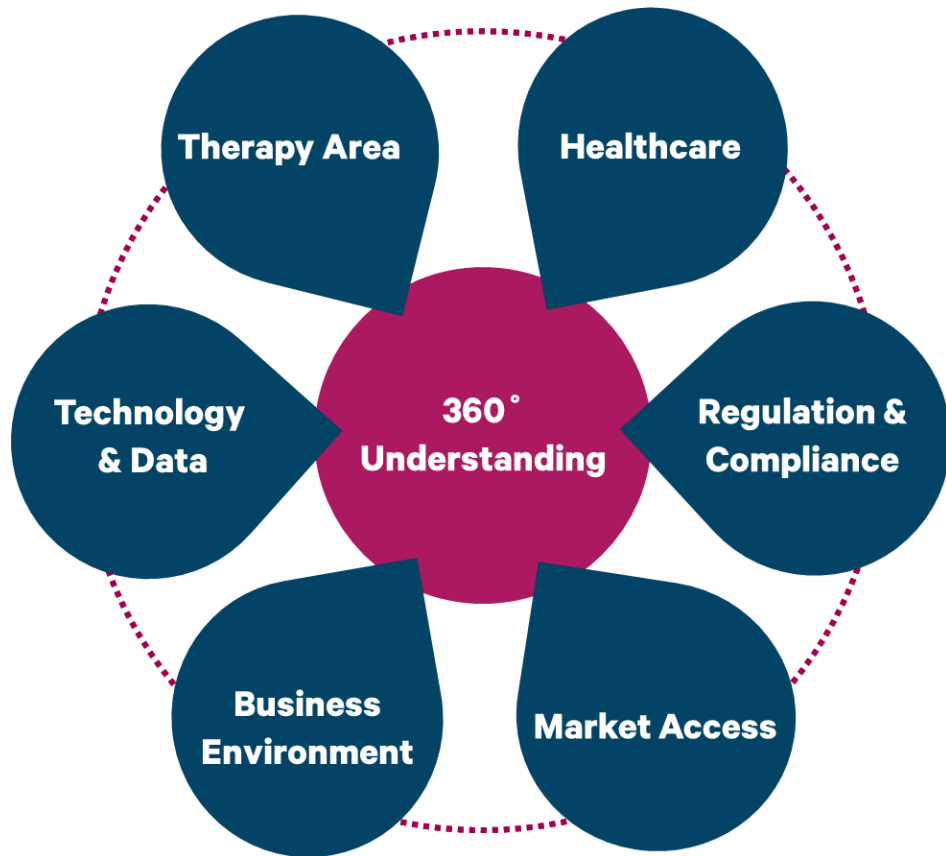
Taking Remote Monitoring to Digital Therapeutics

Health Tuesday Nov 2021



**We optimize the treatment pathways
with remote monitoring solutions and
provide better health outcomes, cost-
efficiency and overall quality of care**

Orla's strength is 360° understanding of DTx research, development and commercialization



Orla DTx was founded 2020 and is located in Helsinki. It is a spinoff of Finland's largest teleoperator, IoT, AI and cybersecurity company Elisa Oyj.

We have products in two therapy areas

Our focus is now on commercialization of our solutions with value-based care driven business model

INR Remote Monitoring for Anticoagulation

- Better treatment results and improves the patients' perceived quality of life.
- HCP has 24/7 insight into the treatment, creating peace of mind for both healthcare professionals, as well as patients.

PEF Remote Monitoring for Asthma

- Modernizes asthma patients' treatment pathway.
- Improves treatment results.
- Reduces resource use.

INR Remote Monitoring for Anticoagulation

The modern treatment pathway for INR patients with improved health outcomes



**Better treatment results
and more satisfied patients**

Orla INR Remote Monitoring improves the patients' time in therapeutic range (TTR).

**Assurance of successful
treatment**

**Direct insight to treatment
compliance and results**

Value-based care pricing

Customers pay for effective treatment

Orla INR care model

Better treatment outcomes with Orla Remote Monitoring

- Patient measures the INR value and adjusts the warfarin dosage¹
- Patient use the Orla Remote Monitoring mobile app, Roche's CoaguChek™ – measurement device and 24 test strips a year
- Electronic warfarin card
- Reminders of the following measurement time
- Information that the healthcare professional sees the level of care



¹ There is a possibility for self-measurement while using Orla Remote Monitoring, in which case the healthcare professional adjusts the warfarin dosage for the patient

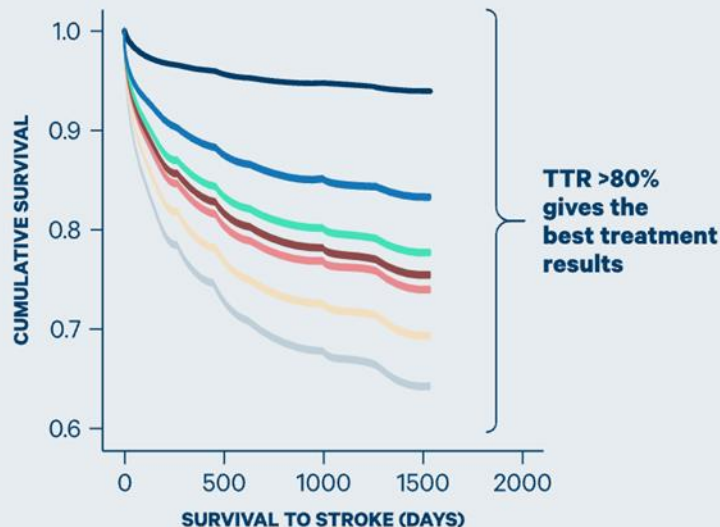
Anticoagulation therapy is efficient when implemented well

Warfarin treatment

The VKA value² should remain within the treatment range more than 65% of the time³

Warfarin group

- 71-100%
- 61-70%
- 51-60%
- 41-50%
- 31-40%
- <30%
- Non warfarin

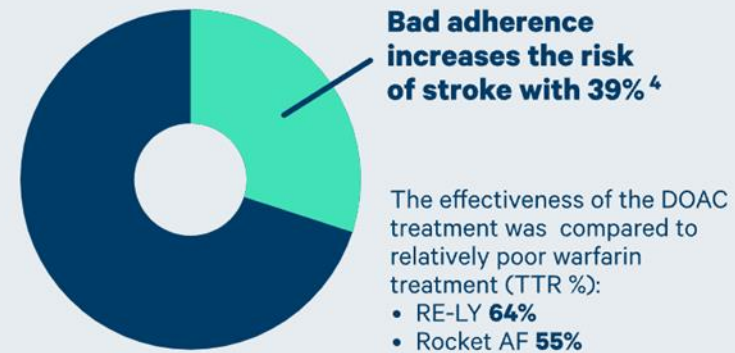


DOAC treatment

The adherence should be >80%⁴

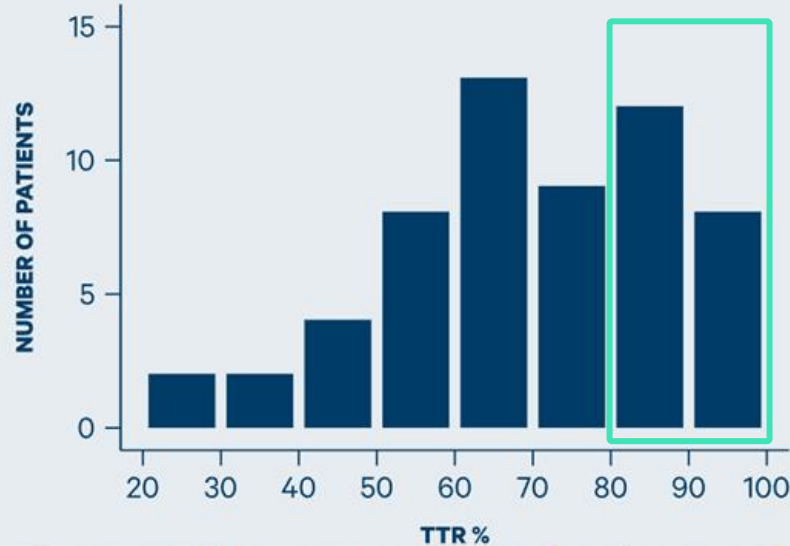
DOAC patients

- 30% of patients cannot reach the goal
- 70% of patients reach the goal*



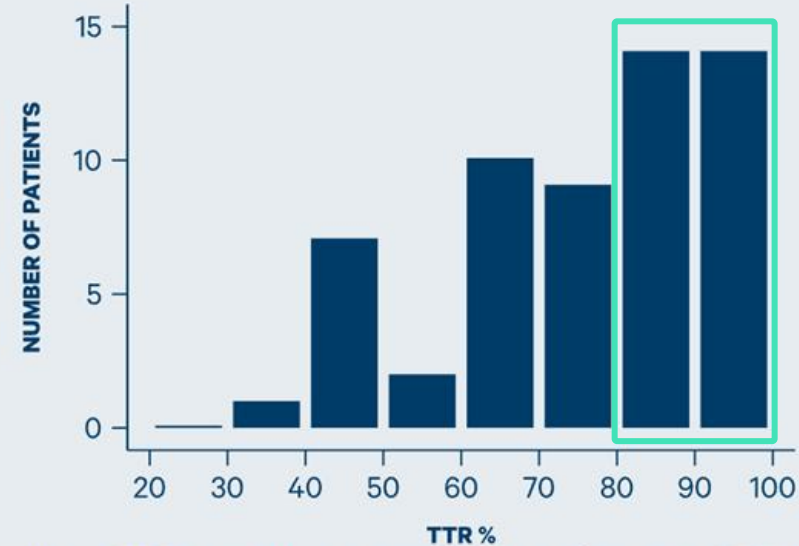
Better treatment outcomes with Orla INR-RM

The distribution of TTR before using Orla INR



The mean TTR pre intervention in the cohort was 70.71 (SD +/- 18.7); median 71.13 [IQR 56.7 – 84.8]

Half of the patients achieved outstanding treatment results (TTR >80%) and most achieved a good treatment balance

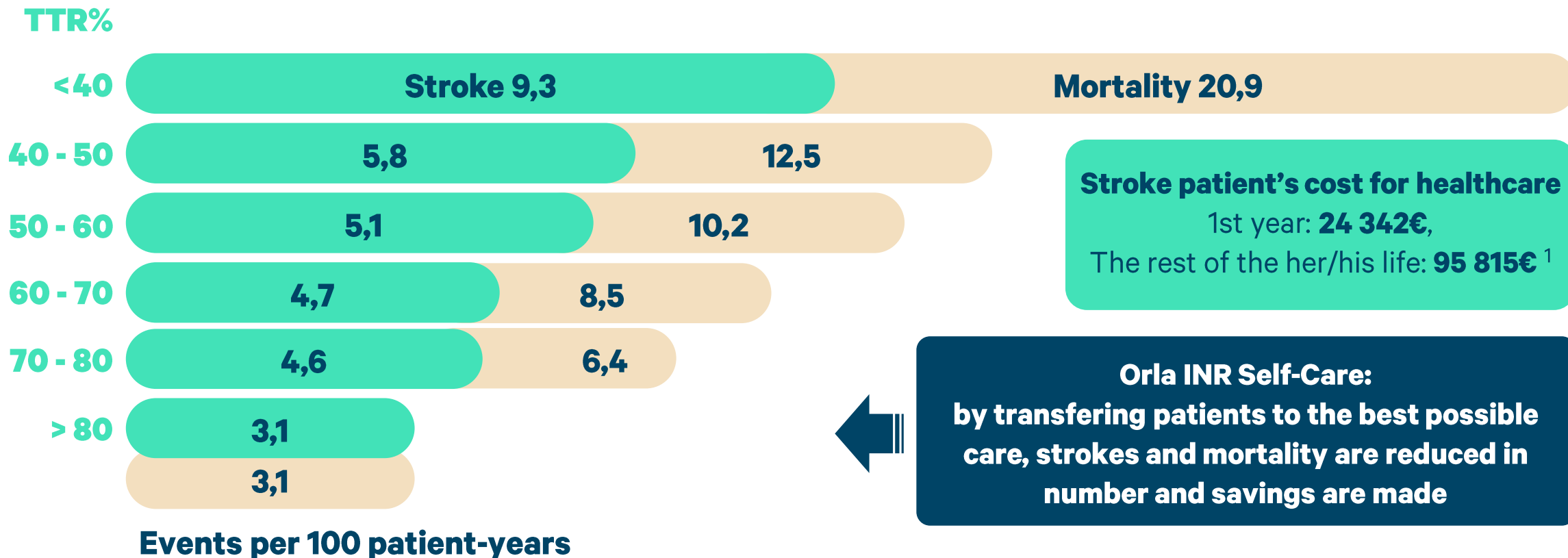


Mean TTR post intervention in the cohort was 75.72 (SD +/- 20.2); median 79.4 [IQR 64.2 – 88.6]

Orla Data on file: Most in VKA therapy achieved a good care balance

Clear Benefits of Optimizing Warfarin Treatment²

Sub-optimal treatment raises the risk for terminal events



¹ DUODECIM 2012;128(2):139-46, Linna et al. Lääkärilehti 35/2017 ² FinWAF; <https://pubmed.ncbi.nlm.nih.gov/28317274>

Orla PEF Remote Monitoring saves time and money ¹⁾

We deliver more than 40 000 PEF measurements per month (avg. 1 in every minute)



✱ **Connected device(s)**

Monitoring and diagnosing with better quality

- The product evaluates the quality of the measurement series and reminds the patient to do measurements on time.
- By automating the quality control of measurements we speed-up a reliable diagnosis.

More satisfied patients

- The patients are more satisfied as they have a direct contact with the healthcare professional during the entire measurement period.
- The app improves the adherence by guiding during the entire diagnosis and/or treatment period and by patient questionnaires.

Cost-effective solution

- Reporting based on an automated high-quality diagnosis and/or monitoring minimizes unnecessary patient visits and saves time of healthcare professionals.
- The saved resources can be more efficiently used.

¹⁾ Tapanainen et al. Duodecim; 2019;135(18):1745-52

Our PEF Remote Monitoring product has demonstrated resource savings and more reliable asthma diagnosis process¹⁾

Time savings



NURSES

29%



DOCTORS

27%



WORKING PATIENTS

15%



PATIENTS OVER 65

10%

Cost savings



MUNICIPALITIES

20%



PATIENTS

12%

¹⁾ Tapanainen et al. Duodecim; 2019;135(18):1745-52



Thank you!



Tuomas Mäkynen

CEO, Co-founder

tuomas.makynen@orladtx.com

+358 44 3315 874