



**RUOKAVIRASTO**  
Livsmedelsverket • Finnish Food Authority

---

# Export licenses for food export from Finland to China

---

**Riitta Rahkila, Senior Officer, DVM PhD**  
**Finnish Food Authority Export Section**

**11.3.2019 China coaching day**

# Export licenses for food export from Finland to China



- FFA's role in food export to China
- Food export related license status
- Certificates for export to China
- Current issues on Finnish food export to China



# Finnish Food Authority Export Section



Aim: to enhance the export of Finnish food, feed, live animals and gametes to third countries



- Work closely together with Business Finland, Ministry of Agriculture and Forestry (MAF) and the Embassy of Finland in Beijing
- MAF is in charge of the SPS-(sanitary and phytosanitary) requirements of international trade
  - Bilateral agreements
- Finnish Food Authority is in charge of the implementation of bilateral agreements

# Finnish Food Authority

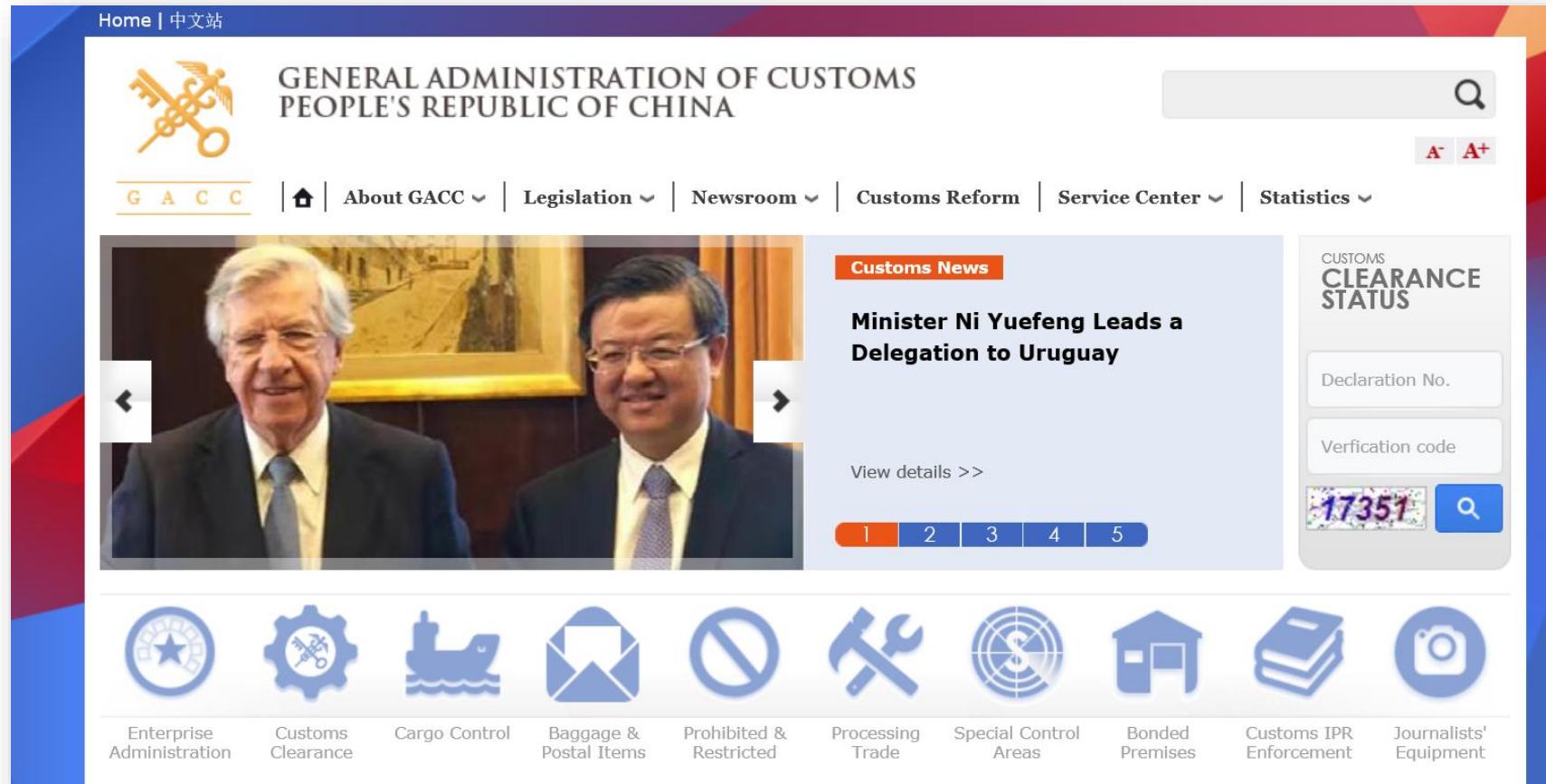
## Export Section



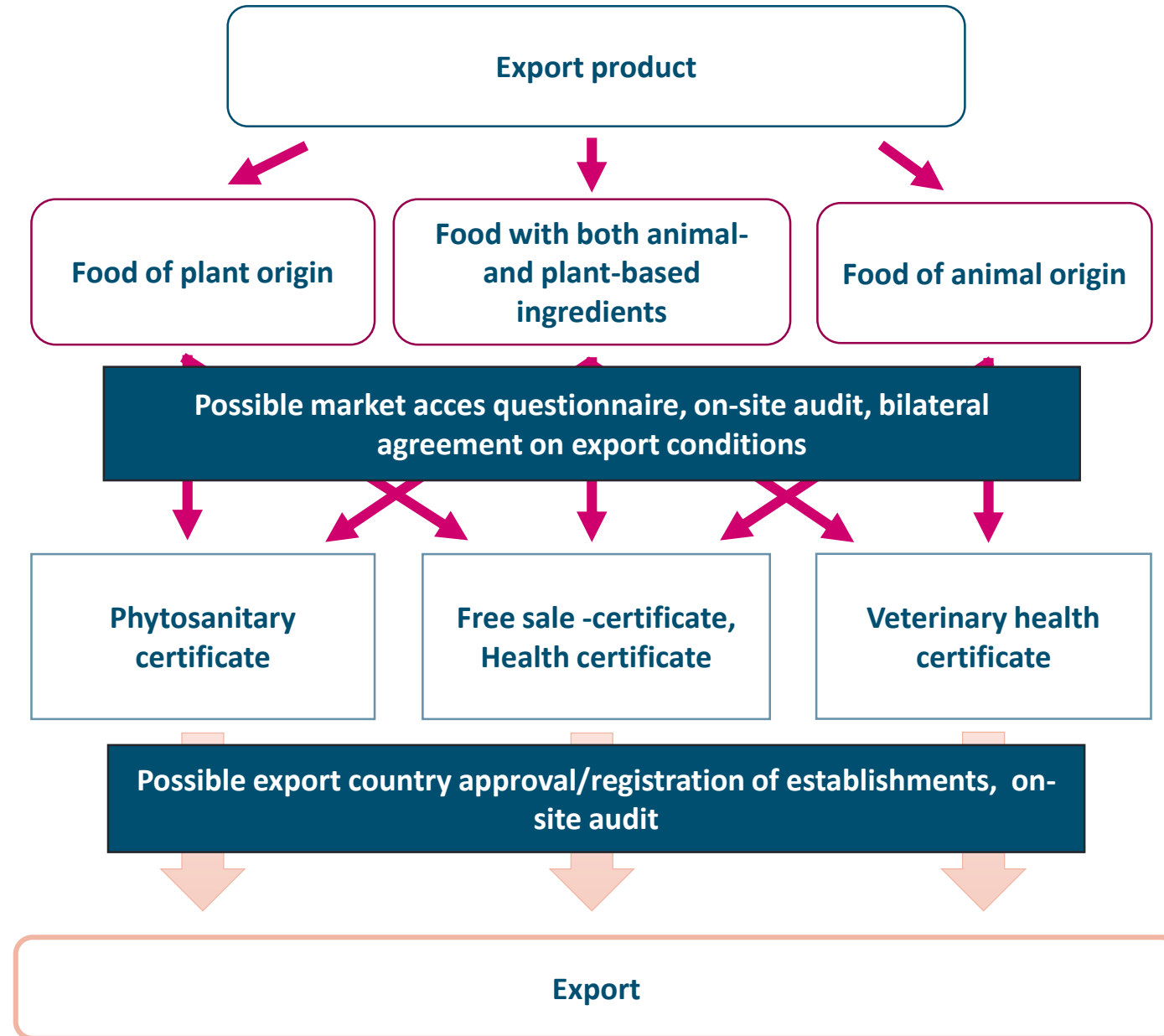
The central competent authority in veterinary export issues:

- Administration of Veterinary and Phytosanitary certificates
- Market access questionnaires
- Inspection and audit tasks to verify the compliance of operators with export requirements and the effectiveness of the official export control at the local level
  - Control systems (China, Eurasian Economic Union incl. Russia, USA)
- Organizing third country audits
- Training and guidance of business operators and official control on export requirements
- Co-operation with the officials of third countries on animal disease and food safety issues

# General Administration of Customs People's Republic of China



<http://english.customs.gov.cn/>





# Establishment registration to GACC

- The operator is responsible for meeting the export requirements (FFA assists 😊) – the operator contacts FFA
- On-site audit by FFA: evaluation of the HACCP-based own control and the premises
  - Corrective actions, inspection by local competent authority
- When the export requirements are met - Declaration of compliance by FFA and the application of the operator is sent to GACC
- Evaluation by GACC, possible on-site audit
  - Corrective actions, additional information, inspection by FFA/local competent authority
- When all requirements are met according to GACC - Registration



# Bilateral agreements ("Export licenses") FI - CH



## Pork

- Protocol, Veterinary Certificate
- Frozen pork, ten "products"

## Milk products

- Veterinary Certificate
- Products defined in the establishment approval document

## Meat other than pork

- Export not possible

## Honey

Export not possible (except processed honey products?)

## Cereal

- Protocol
- Oat, oat flakes and barley



## Mushrooms

Export not possible

## Infant milk formula

- Veterinary Certificate

## Fishery products

- Veterinary Certificate
- Only products from certain fish species and certain product types possible

## Berry products

- Export of frozen blueberry possible
- Export of other berry products not possible at the moment

## "All food and beverages"

From 1.10.2019 general Health Certificate for all foods?





# Berries and berry products

- A bilateral agreement between China and Finland is needed for the export of fresh, frozen and dried fruits.
  - Current agreements: Finland - 冷冻蓝莓 frozen blueberry, 冷冻越橘 frozen bilberry
  - The process for other fresh/frozen/dried berries is just about to start. The approval process might take several years.
- Processed berry products should be ok (juices, candies, jams...) if they comply with the relevant Chinese product standard.
  - Note that bilberry and lingonberry as ingredients might cause problems due to their status as health ingredients / novel foods.



# Registered establishments FI - CH

- Pork: two slaughterhouses + two cold storages
- Milk products: five production plants
- Infant milk formula: two production plants
- Aquatic products: one production plant
- Waiting for approval: storages, fishery establishments



# Veterinary Certificate

- For products of animal origin
- Finnish Food Authority administrates
- Local Official Control issues





# Phytosanitary Certificate

- Finnish Food Authority administers and issues
- Registration to Plant Health register (FFA) needed:

<https://www.ruokavirasto.fi/yritykset/tuonti-ja-vienti/vienti-eun-ulkopuolelle/tuotekohtaista-vientitietoa/kasvituotteet/kasvienvienti@ruokavirasto.fi>

- Oat and Barley: pre-listing of exporter to China required

1 Name and address of exporter	<b>PHYTOSANITARY CERTIFICATE</b> No EC / FI / <b>ORIGINAL</b>	
3 Declared name and address of consignee	4 Plant Protection Organization of Finland To Plant Protection Organization(s) of	
	5 Place of origin	
6 Declared means of conveyance	<b>FINNISH FOOD SAFETY AUTHORITY PLANT PROTECTION SERVICE FINLAND</b>	
7 Declared point of entry		
8 Distinguishing marks, number and description of packages, name of produce, botanical name of plants		9 Quantity declared



# ”Health Certificate”; ”Sanitary Certificate”

- Health certificate for low-risk products/ plant-based products

## HEALTH CERTIFICATE

Products referred to in this certificate and to be exported to the **kohdemaan nimi** are under the supervision and administration of the Local Competent Authority of xxxxxxxxxx (kunnan nimi).

Product description: tuotteen nimi/kuvaus

Manufacturer: valmistajan nimi

## ATTESTATIONS

The products were manufactured and stored in an establishment approved by the competent local public health authority. The manufacturing establishment, the storage establishment and the manufacturing, packaging and storage of the products are under the supervision of competent local public health authority.

The country of origin of the products is Finland.

The products have been manufactured in accordance with the Finnish and EU food regulations and they are fit for human consumption. According to monitoring programs the products contain no harmful levels of contaminants.

The products are free for trade in the EU and free for sale to manufacturers outside the EU.

Done at (place)

On (date)



# Other documents needed for export

- Commercial Invoice
- Packing List
- Certificate for Registration of Foreign Producer and/or Exporters of Foodstuffs
- Air Waybill, Rail Waybill, or Bill of Lading
- Cargo Manifest
- Insurance Certificate
- Certificate of Analysis
- Buyer Seller/Agreement signed by both parties (not required at all ports)
- Certificate of Origin (local Chamber of Commerce)



# Current issues in food export FI-CH

- Excellent relations with the Customs 😊
  - General Administration of Customs People's Republic of China  
<http://english.customs.gov.cn/>
- Greatest achievements lately:
  - Infant milk formula, registration of two plants
  - Fishery establishment, registration of the first Finnish plant







# Current issues in food export FI-CH

- Ongoing Market access processes
  - Poultry
  - BSE/beef
  - Fish feed
  - Barley
  - Processed pork products
  - Berries
- Next?
  - Rye, mushrooms, pet feed...?
  - New establishments for registration; fishery establishments



# RUOKAVIRASTO

Livsmedelsverket • Finnish Food Authority

